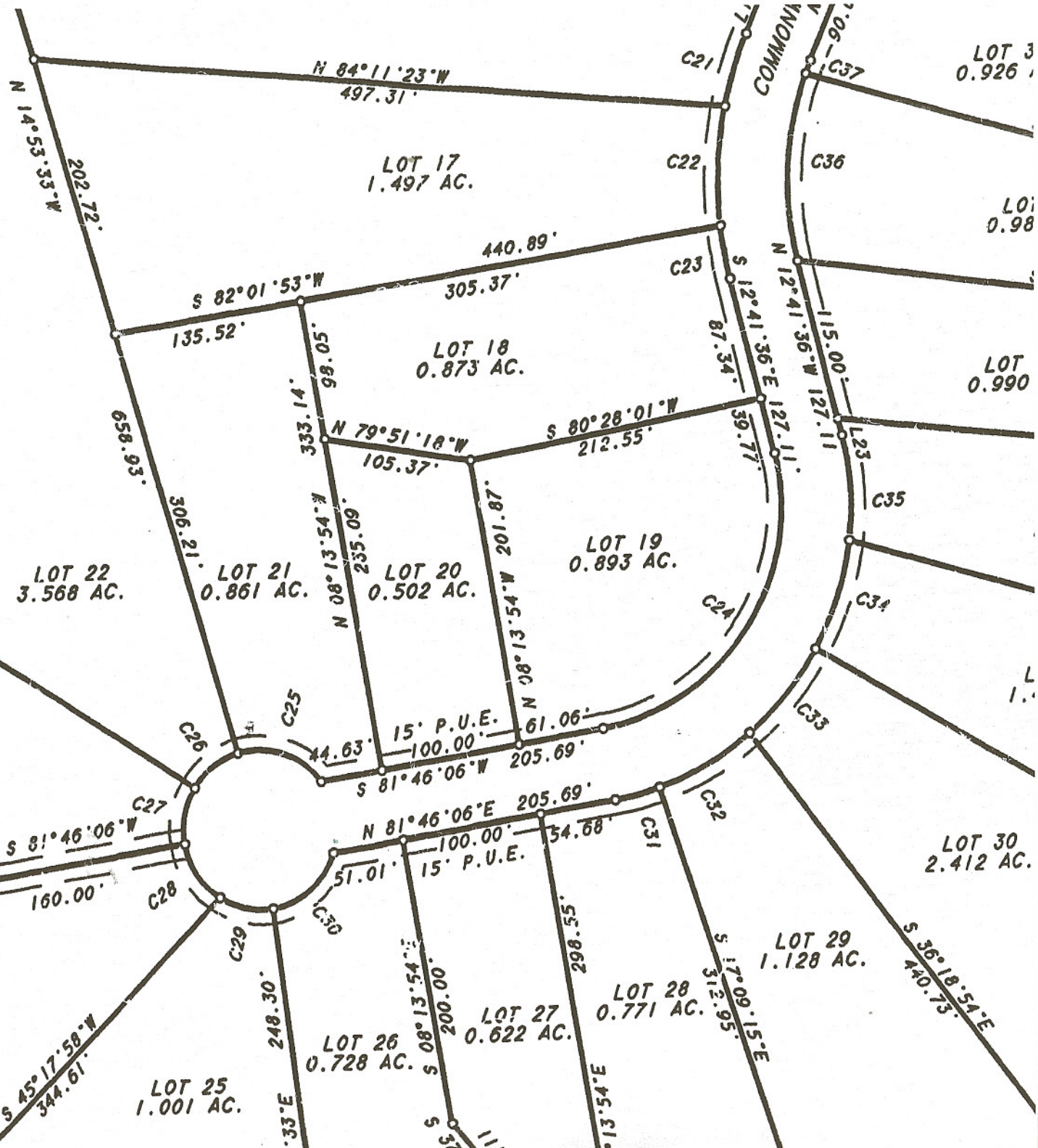


LAWSON
190-1-1
N 34°15'16"E
386.60

IRON PINS SET
25' FROM CORNERS
ALONG BRANCH

D.B. 190A PG. 824
D.B. 513 PG. 824
D.B. 445 PG. 421-PLAT

BRANCH
N 05°46'57"E
MARKED 18"
POPLAR



LOT 3
0.926 AC.

LOT 10
0.98 AC.

LOT 11
0.990 AC.

LOT 30
2.412 AC.

LOT 29
1.128 AC.

LOT 28
0.771 AC.

LOT 27
0.622 AC.

LOT 26
0.728 AC.

LOT 25
1.001 AC.

LOT 24
2.270 AC.

LOT 23
1.476 AC.

LOT 22
3.568 AC.

LOT 21
0.861 AC.

LOT 20
0.502 AC.

LOT 19
0.893 AC.

LOT 18
0.873 AC.

LOT 17
1.497 AC.